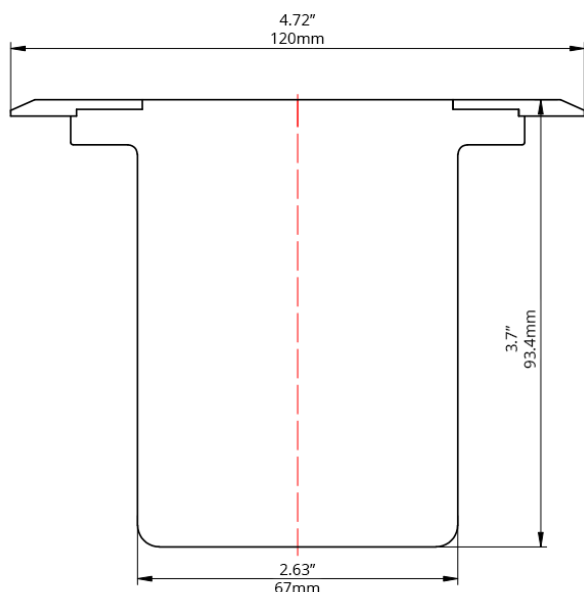


## Solid Cast Brass In-ground Light

Clay is designed with a weather aged brass trim ring and flush tempered glass lens. Structured with a 316 marine grade stainless steel composite body for enhanced stability in loose soil or frost cycles. Clay's aluminum gimbal ring for angle adjustments allows you to direct the light while keeping the fixture flush with the ground- making this fixture ideal for grazing trees or walls.

Hiding our inground fixtures throughout your design will create the right effect without revealing the light source. Where stake mounted lights can create lighting hotspots - drawing the eye directly to the light source, Clay won't detract attention from the beauty of your overall design.

To reduce potential fixture damage from lawnmowers, and other landscape tools, Clay can be installed flush with the lawn, landscaped or hardscaped surface.



<b>Construction</b>	Marine-grade SS lamp body, Brass cover, Nylon plastic housing
<b>Finish</b>	Weathered Red Brass
<b>Mounting</b>	Recessed
<b>Dimensions</b>	4.75" diameter x 3.75" h
<b>Wattage</b>	Maximum 20W
<b>Lamp*</b>	LED MR 16 (Lamp not included)
<b>Voltage</b>	9-15V AC/DC
<b>Includes</b>	5' SJTW 2 x 18AWG Cable
<b>Recommended Use</b>	Pairs with Illumicare's honeycomb louvre

\*Use our 4000K MR16 lamp for a moonlight glow with a cool serene feeling; 2700K for warm inviting conversation areas, and 3000K for a neutral warm accent cohesive look.